

MALDON SERVICED OFFICES TO LET

Close to town centre

172ft² (15.98m²)

ROBERT DEWAR ASSOCIATES
01245 350160



Heybridge Business Centre 110 The Causeway CM9 4ND

DESCRIPTION:

The Heybridge Business Centre is a multi-tenanted 3 storey serviced office building located on a secure business estate. The offices are carpeted and supplied with furniture as well as secure filing cabinets. Shared kitchen and WC facilities provided on each floor. EPC rating is D79. The inclusive terms include:

- Electricity/heating
- Business Rates/Water Rates
- Buildings Insurance
- Office Cleaning/CCTV Security
- Receptionist
- Allocated Parking

AVAILABLE ACCOMMODATION: approx. size

1st floor offices

Suite FF07 172ft² (15.98m²) £402pcm plus VAT

Suite FF08 172ft² (15.98m²) £402pcm plus VAT

Suite FF09 172ft² (15.98m²) £402pcm plus VAT

Suite FF10 172ft² (15.98m²) £402pcm plus VAT

2nd floor offices

Suite SF08 172ft² (15.98m²) £402pcm plus VAT available May 2024

LOCATION:

Heybridge Business Centre is located on the eastern side of The Causeway close to the Benbridge roundabout, which via the B1019 provides access to the A12 at Hatfield Peverel.

TERMS AND CONDITIONS:

Available on easy in/easy out inclusive monthly payment. Tenants are to be responsible for their own telephone and internet usage.

PARKING:

Allocated parking on site

LEGAL COSTS: Each Party to be responsible for their own legal costs.

VIEWING: By prior arrangement with Robert Dewar Associates – **01245 350160**

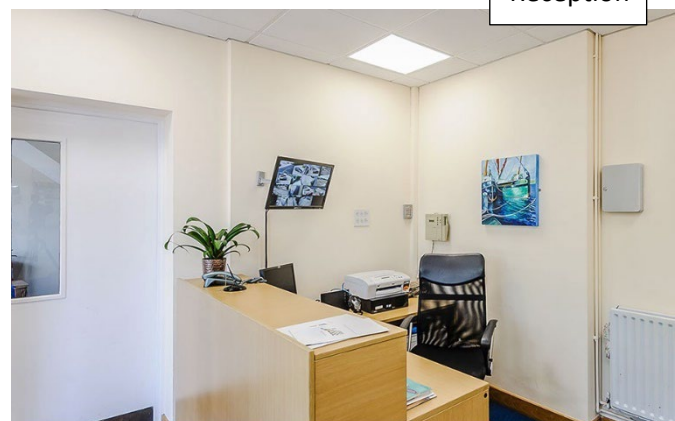
204a NEW LONDON ROAD CHELMSFORD ESSEX CM2 9AB

DISCLAIMER: No responsibility is accepted as to the accuracy of these particulars or statements made by our staff concerning the above property. Robert Dewar Associates endeavor to maintain accurate descriptions of properties however, these are intended only as a guide and purchasers/lessees must satisfy themselves by personal inspection. All negotiations to be conducted through Robert Dewar Associates. Unless otherwise stated all prices and rents are quoted exclusive of VAT. These particulars do not constitute any part of an offer or contract.

All-inclusive rents
Easy In/Easy Out
Flexible terms
Parking



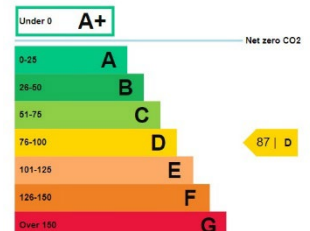
Sample office



Reception

Energy efficiency rating for this property

This property's current energy rating is D.



Properties are given a rating from A+ (most efficient) to G (least efficient).

propertylink

Zoopa

The Property Ombudsman

CoStar AWARDS
2022 WINNER